



**UNICUS
OLYMPIADS**

#UnicusIsUnique

Sample Paper



Class 2

Unicus Global Science Olympiad (UGSO)

Time: 60 minutes

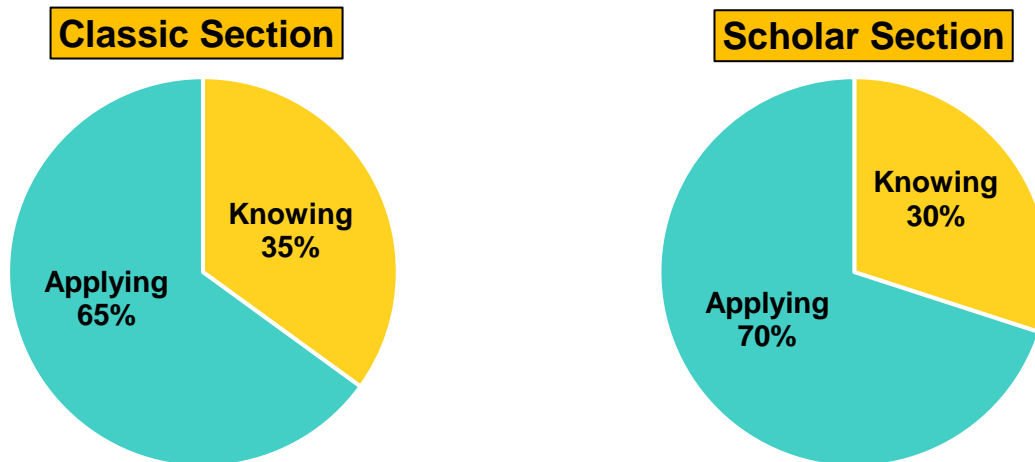
Pattern and Marking Scheme			
Section	Total Questions	Marks per Question	Total Marks
Classic Section	20	1	20
Scholar Section	10	2	20
Grand Total	30		40

Unicus Global Science Olympiad (UGSO)

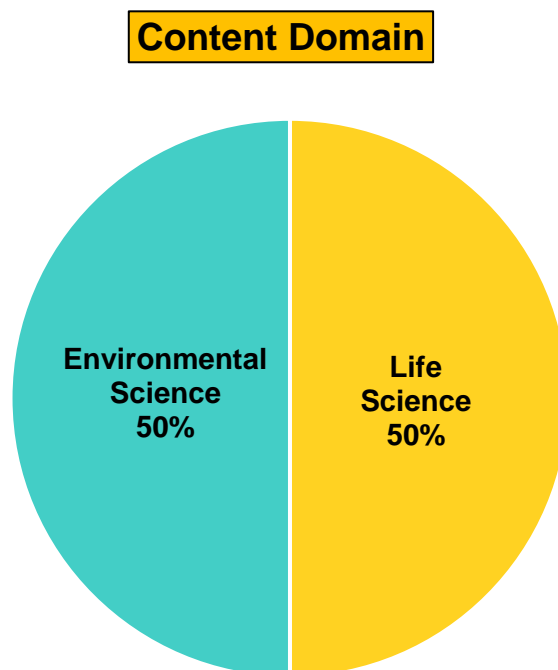
The **Unicus Global Olympiad** is organised around two dimensions:

1. Content dimension, specifying the subject matter domains to be assessed
2. Cognitive dimension, specifying the thinking processes to be assessed

Target percentages of the question paper devoted to cognitive domains



Target percentages of the question paper devoted to content domains



For more details, visit <https://www.unicusolympiads.com/>.

Classic Section (Each Question is 1 Mark)

Cognitive Domain: Knowing

Content Domain: Life Science

1. Noah describes a plant that he saw in an encyclopaedia as given below. Identify the plant Noah described:

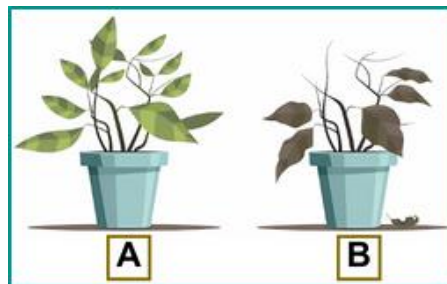
It is a non-woody plant that looks like tiny green onions and has a mild onion flavour.

- | | |
|-----------|-------------|
| a. Chives | b. Cilantro |
| c. Basil | d. Thyme |

Cognitive Domain: Applying

Content Domain: Life Science

2. Brian planted two plants in different pots and kept them side by side in his garden. Plant A was with roots while plant B was without roots. After a few days, it was observed that the leaves of plant B turned brown and wilted. What is the possible reason behind this phenomenon?



- a. The brown colour might be because plant B didn't get any sunshine.
- b. Plant B couldn't absorb water and nutrients because it had no roots.
- c. Plant B didn't get enough space to grow.
- d. Plant B could not absorb air.

Cognitive Domain: Applying

Content Domain: Life Science

3. Refer to the given word grid and answer the question that follows:
Which of the following is NOT HIDDEN in the given word grid?

S	R	P	L	C	A	P
C	A	C	A	O	S	E
N	T	M	V	F	D	P
I	Y	R	C	F	F	P
M	U	W	X	E	G	E
K	I	Q	Z	E	H	R

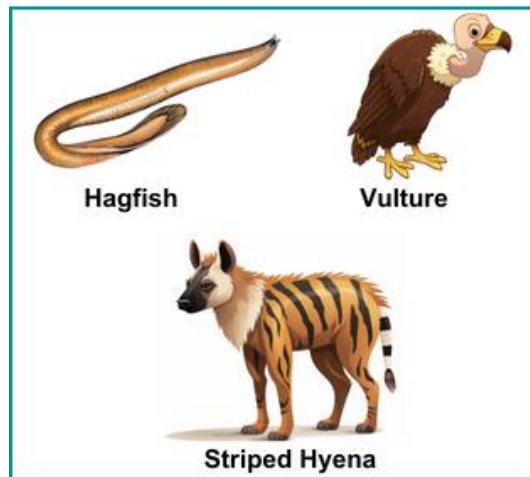
Unicus Global Science Olympiad (UGSO)

- This plant is used to make a popular hot beverage often enjoyed in the morning.
- This plant product is often used as a seasoning and comes from dried seeds.
- This plant gives us chocolate.
- This is a spice, commonly used in cooking and comes from the bark of a tree.

Cognitive Domain: Applying

Content Domain: Life Science

4. The animals seen in the box below are certain types of animals based on their eating habits. Identify the type of animals.
(You will get the name of such animals by crossing every third letter in the given options.)

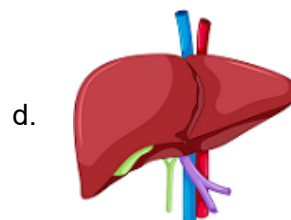
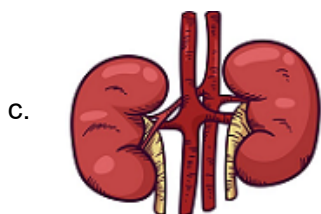
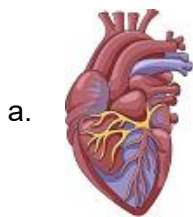


- HEGRBMIVPORTESO
- CAGRNIWVQORCESL
- OMFNIZVOBREAS
- SCUAVOENMGEPRSZ

Cognitive Domain: Knowing

Content Domain: Life Science

5. Lucy was solving difficult math problems for homework.
Identify the internal organ Lucy is using the most to solve the math problems.



Cognitive Domain: Applying	Content Domain: Life Science
-----------------------------------	-------------------------------------

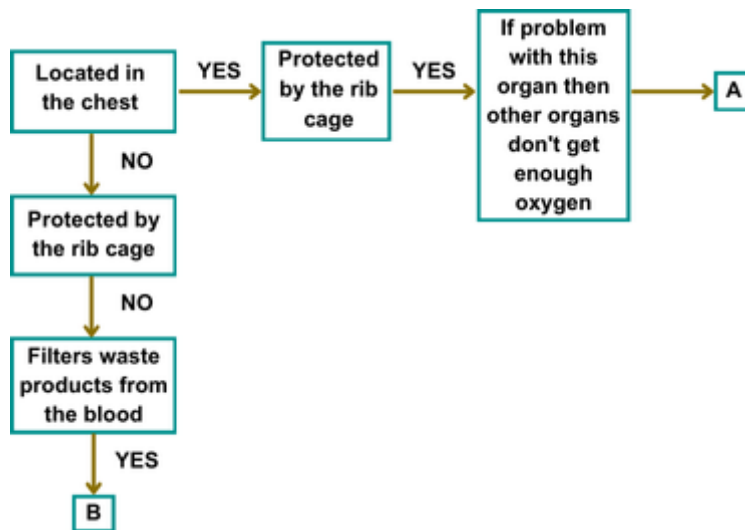
6. Timothy accidentally touched a hot utensil and quickly pulled his hand away. Identify which organ system detected the heat and which one helped him to move his hand away.



- The respiratory system detected the heat and the nervous system helped to move the hand away.
- The digestive system detected the heat and the respiratory system helped to move the hand away
- The nervous system detected the heat and the muscular system helped to move the hand away.
- The circulatory system detected the heat and the skeletal system helped to move the hand away.

Cognitive Domain: Applying	Content Domain: Life Science
-----------------------------------	-------------------------------------

7. Consider the diagram given below. Based on the following descriptions, identify the MOST LIKELY internal organs for each category (A and B).



- | | |
|---------------------------|--------------------------|
| a. A – Brain, B – Heart | b. A – Kidney, B – Lungs |
| c. A – Stomach, B – Liver | d. A – Heart, B – Kidney |

Cognitive Domain: Knowing

Content Domain: Life Science

8. Naomi's favourite food is spaghetti with meatballs.
To make it a vegetarian dish, what could she replace the meatballs with?

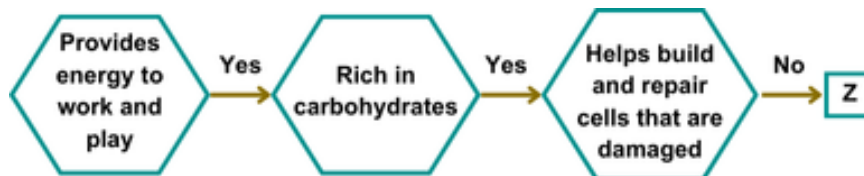


- a. Tofu
b. Fish
c. Lamb
d. Prawn

Cognitive Domain: Applying

Content Domain: Life Science

9. Study the given flow chart carefully.
Identify 'Z':



- a. Soyabean
b. Cereals
c. Mango
d. Egg

Cognitive Domain: Applying

Content Domain: Life Science

10. Harold pasted two pictures namely 1 and 2 in his notebook related to foods as shown below:
Choose the relevant statement regarding the pictures given:

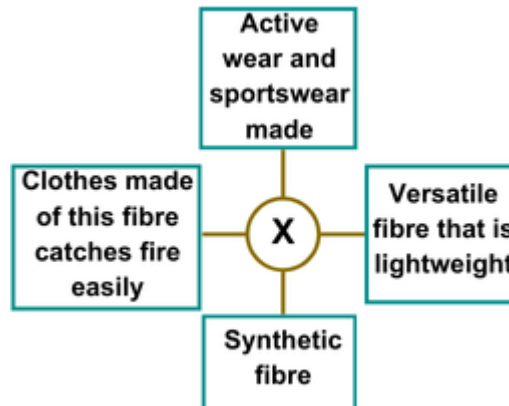


- a. Foods in 1 should be eaten sparingly.
b. Foods in 2 help to boost immunity.
c. Increased intake of foods in 2 will lead to obesity.
d. Foods in 1 helps us to repair our body when injured.

Cognitive Domain: Applying

Content Domain: Environmental Science

11. Study the given table and select the option that best represents the headings X, Y and Z:
Which of the following fibres is being described as X?



- a. Cotton
b. Silk
c. Linen
d. Polyester

Cognitive Domain: Applying

Content Domain: Environmental Science

12. Denzel is planning to go hiking on a hot summer day.
Which type of clothing should he wear to stay comfortable?



- a. A lightweight, breathable t-shirt and shorts
b. A thick woollen sweater and jeans
c. A long-sleeved cotton sweatshirt and trousers
d. A raincoat and flip-flops

Cognitive Domain: Knowing

Content Domain: Environmental Science

13. Look at the images of different road transport and answer the following:
- Identify the means of road transport that cannot carry more than 2 people.
 - Identify the means of road transport that can carry the whole family and their belongings to a picnic destination.



Unicus Global Science Olympiad (UGSO)

- a. 1 - Bus, 2 - Truck
- c. 1 - Taxi, 2 - Scooter

- b. 1 - Scooter, 2 - Car
- d. 1 - Truck, 2 - Bus

Cognitive Domain: Knowing	Content Domain: Environmental Science
----------------------------------	--

14. Leslie wants to share vacation photos with his friends and family scattered across the globe. Which means of communication is most suitable and fastest for this purpose?



Radio broadcast



Personal letter or postcard



Newspaper advertisement



Email with attachments

Cognitive Domain: Applying	Content Domain: Environmental Science
-----------------------------------	--

15. Study the given word chop table.

Which of the following sets of boxes will give the names of means of communication that is-

- A. used for broadcasting news and music to the public?
- B. used for sending written messages with the help of the internet?

1 NE	2 RA	3 WS	4 GE	5 ST
6 UR	7 E	8 DI	9 PA	10 O
11 ES	12 PH	13 MA	14 IK	15 IL
16 IS	17 AT	18 PE	19 GH	20 S

- a. A - 2, 8, 10; B - 7, 13, 15;
- c. A - 7, 13, 19; B - 2, 8, 10;

- b. A - 1, 3, 9, 18, 19; B - 4, 5, 6, 7;
- d. A - 12, 10, 14; B - 2, 8, 10;

Cognitive Domain: Knowing

Content Domain: Environmental Science

16. Choose the correct option regarding the two statements written below.

Statement 1: Emma rides her bicycle to school instead of asking her mom to drive her car.
Statement 2: Sophie throws her kitchen trash in the bin and does not burn it as it will create smoke.

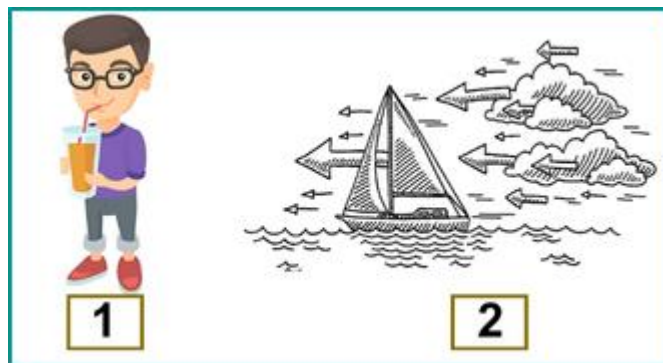
- a. Both of them are increasing air pollution.
- b. Both of them are reducing air pollution.
- c. Only Emma is reducing air pollution.
- d. Only Sophie is reducing air pollution.

Cognitive Domain: Applying

Content Domain: Environmental Science

17. A boy was sucking juice from the straw, the liquid rises in it as seen in picture 1.
It is easier to row the boat when the wind is blowing behind you as seen in picture 2.

Which property of air is demonstrated in these two activities?



- a. Air is required for burning
- b. Air can be compressed
- c. Air exerts pressure
- d. Air takes up space

Cognitive Domain: Applying

Content Domain: Environmental Science

18. David was blowing more air into the campfire and the flames were growing bigger.
Which property of air is demonstrated here?



- a. Air can push things
- b. Air helps things take on different shapes
- c. Air has weight
- d. Air is necessary for burning

Cognitive Domain: Applying

Content Domain: Environmental Science

19. Amy is a geologist doing research on volcanic regions. She is particularly interested in a rock that forms from volcanic glass, is porous and used as an abrasive for cleaning and polishing. Which rock is she studying?



Pumice



Obsidian



Gypsum



Quartzite

Cognitive Domain: Applying

Content Domain: Environmental Science

20. Refer to the given word grid and answer the question that follows:
Which of the following minerals is NOT HIDDEN in the given word grid?

D	I	A	M	O	N	D	Q
S	G	C	H	J	L	I	U
W	E	R	T	U	Q	X	A
S	I	L	I	C	A	M	R
A	Q	Z	A	C	B	N	T
E	O	R	N	B	R	S	Z

- It is a mineral that is used to make watch dials.
- A soft mineral that is used to make pencil lead and polishes.
- It is the hardest mineral found in nature and is used to make beautiful jewellery and cut glass.
- This mineral is used to make glass, like the glass in windows or bottles.

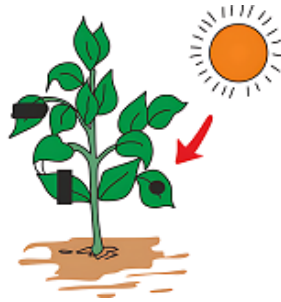
Scholar Section (Each Question is 2 Marks)

Cognitive Domain: Applying

Content Domain: Life Science

21. During a science experiment, Jordan covered a part of a plant's leaves with a piece of dark paper. After a few days, he noticed that the covered part of the leaves turned brown, while the rest of the leaf remained green.

What does this experiment prove?



- Leaves do not need sunlight to stay green.
- The covered part of the leaf was protected from insects.
- Sunlight is necessary for leaves to make food for the plant that will not occur in the covered area.
- Dark paper can turn leaves brown in colour.

Cognitive Domain: Applying

Content Domain: Life Science

22. Read the given statements made by four students about senses.

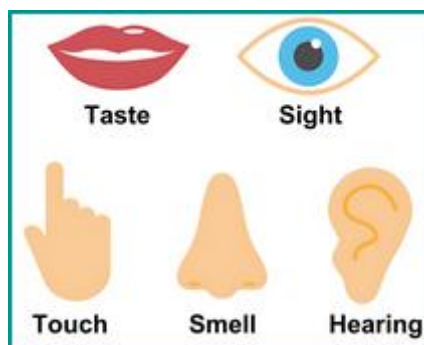
Ronny – I love the smell of shoe polish when I polish my shoes.

Timmy – The grass felt soft and a bit wet from the morning dew.

George – I like watching football on television.

Mary – At the carnival, I bought some salty popcorn.

Now select the correct option regarding this:



- George used the sense which helps us to identify a black and white object.
- Timmy used the sense which helps us to choose a good perfume.
- Mary used the sense which helps us to respond to a doorbell.
- Ronny used the sense which helps to differentiate between hot and cold chocolate.

Unicus Global Science Olympiad (UGSO)

- a. Salamander : Newt
- c. Polar bear : Snake

- b. Pigeon : Monkey
- d. Poison tree frog : Arctic fox

Cognitive Domain: Applying

Content Domain: Life Science

26. Jamie found a small bird's nest high up on a tree in his backyard. Why is this location good for the bird?
- a. It helps the bird find more food.
 - b. It keeps the bird and its eggs safe from predators.
 - c. It helps the nest to get direct sunlight and make the nest warmer.
 - d. It helps the bird to get fresh air.

Cognitive Domain: Knowing

Content Domain: Life Science

27. Why do frogs need to live near water?
- a. To play around and stay warm.
 - b. To find plenty of food.
 - c. To keep their skin moist and lay their eggs
 - d. To stay away from predators.

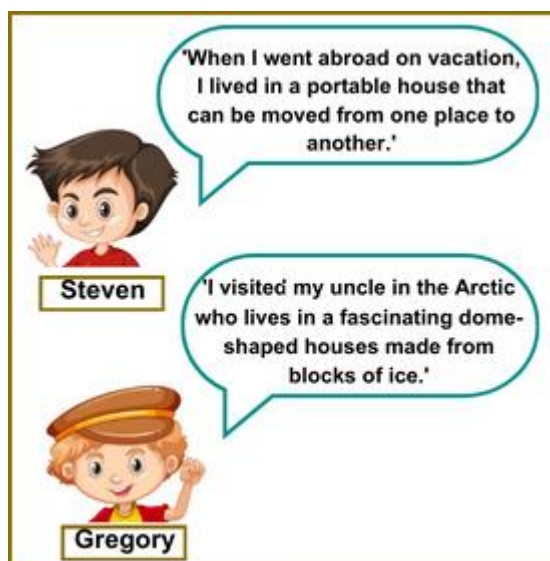
Direction (for questions 28 to 30): Carefully read the given passage and answer the following questions.

A house is a construction made for living. There are different types of houses in our surroundings. Some houses are used for temporary housing such as caravans and houseboats, while other houses are permanent houses such as bungalows, mansions etc. The type of house we build depends upon our needs.

Cognitive Domain: Knowing

Content Domain: Environmental Science

28. Read the conversation between two friends and select the correct option:

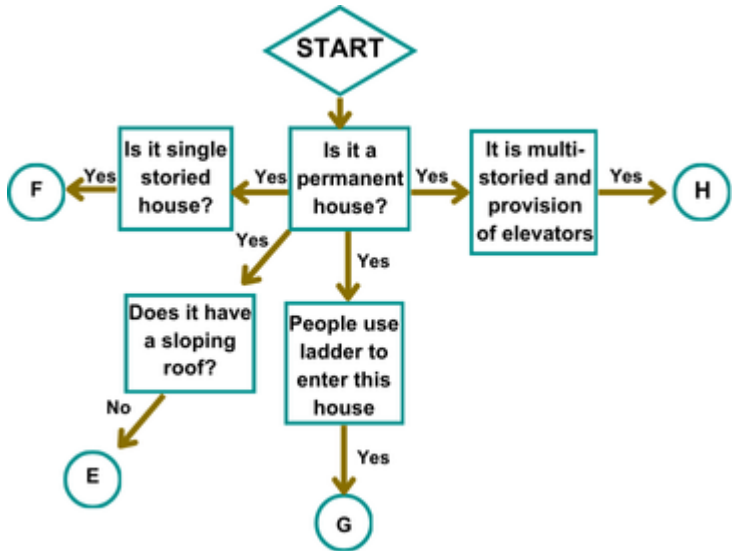


Unicus Global Science Olympiad (UGSO)

- a. Steven described a houseboat while Gregory described a yurt.
- b. Steven described a caravan while Gregory described a lighthouse.
- c. Steven described a bungalow while Gregory described a villa.
- d. Steven described a caravan while Gregory described an igloo.

Cognitive Domain: Applying | **Content Domain: Environmental Science**

29. Study the given flow chart carefully.
Where would a stilt house and an apartment can be placed?



- a. Stilt house – G, Apartment - H
- b. Stilt house – H, Apartment - F
- c. Stilt house – F, Apartment - E
- d. Stilt house – F, Apartment - G

Cognitive Domain: Applying | **Content Domain: Environmental Science**

30. Jack is an architect designing houses for a very crowded city. Which type of house should he most likely design and why?

- a. Stilt house, to protect from flooding
- b. Apartment, to maximise the use of limited space
- c. Igloo, to keep warm
- d. Bungalow, to provide large open spaces

Answer Key

1.	a	2.	b	3.	d	4.	d	5.	b	6.	c	7.	d
8.	a	9.	b	10.	c	11.	d	12.	a	13.	b	14.	d
15.	a	16.	b	17.	c	18.	d	19.	a	20.	b	21.	c
22.	a	23.	c	24.	c	25.	a	26.	b	27.	c	28.	d
29.	a	30.	b										

